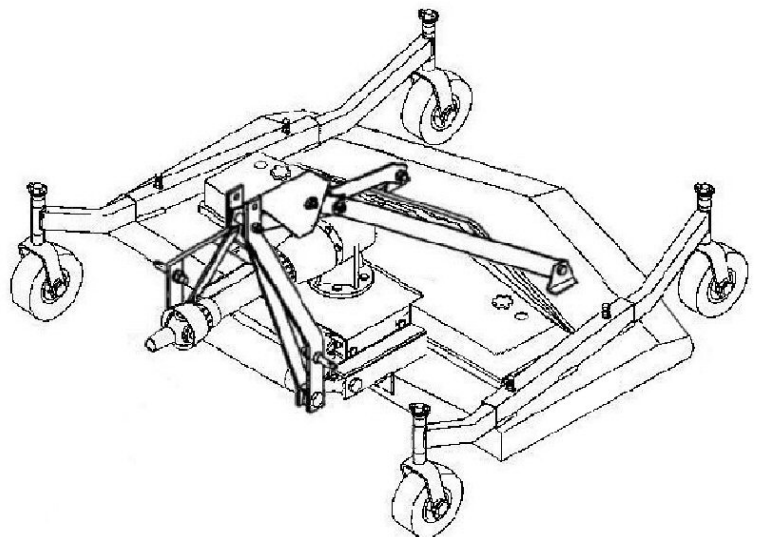
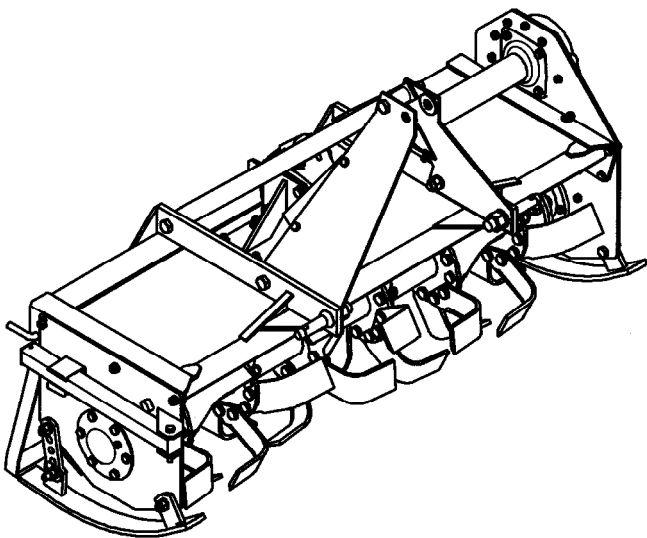


XB & XBX

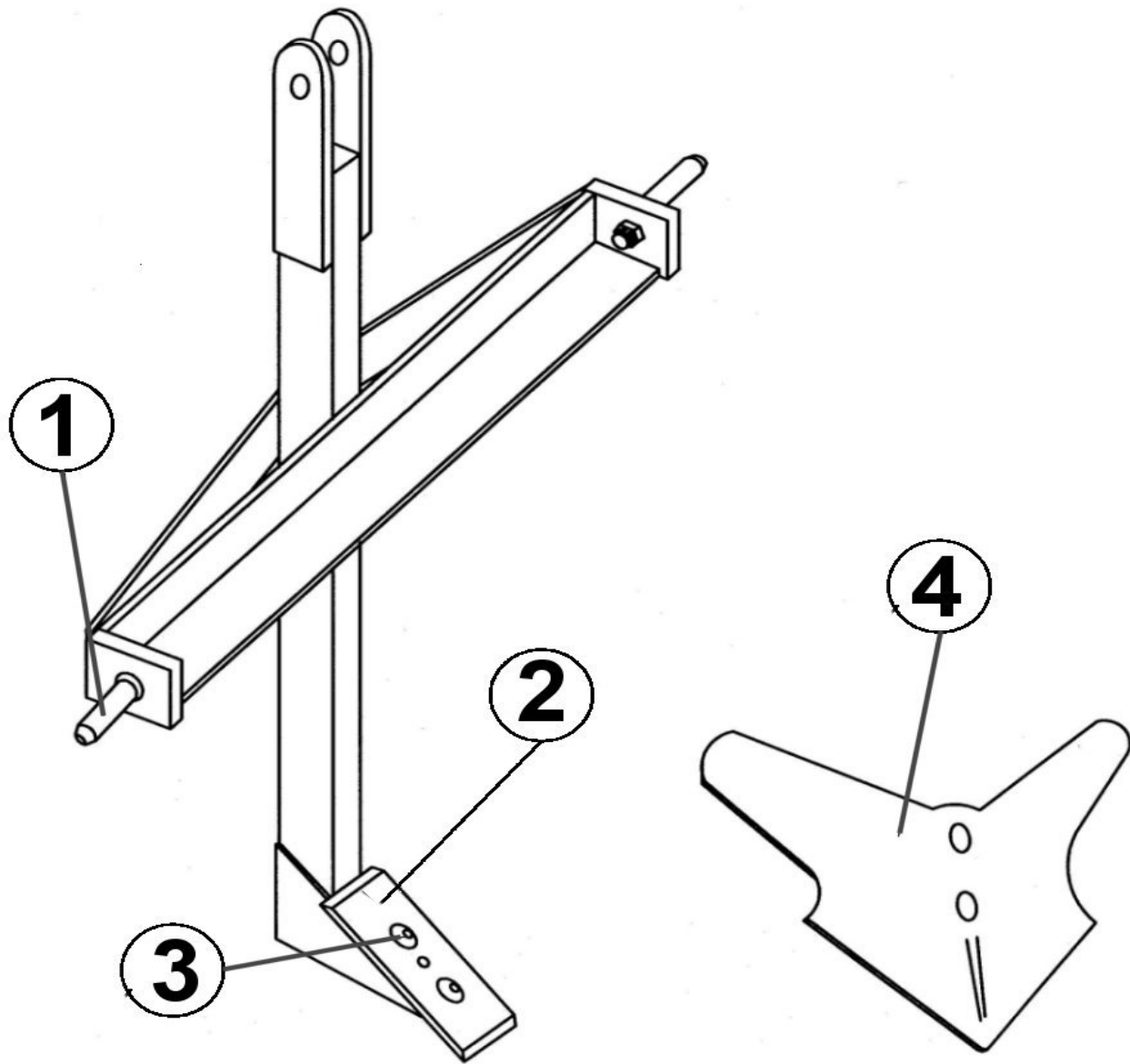
PARTS MANUAL



CONTENTS

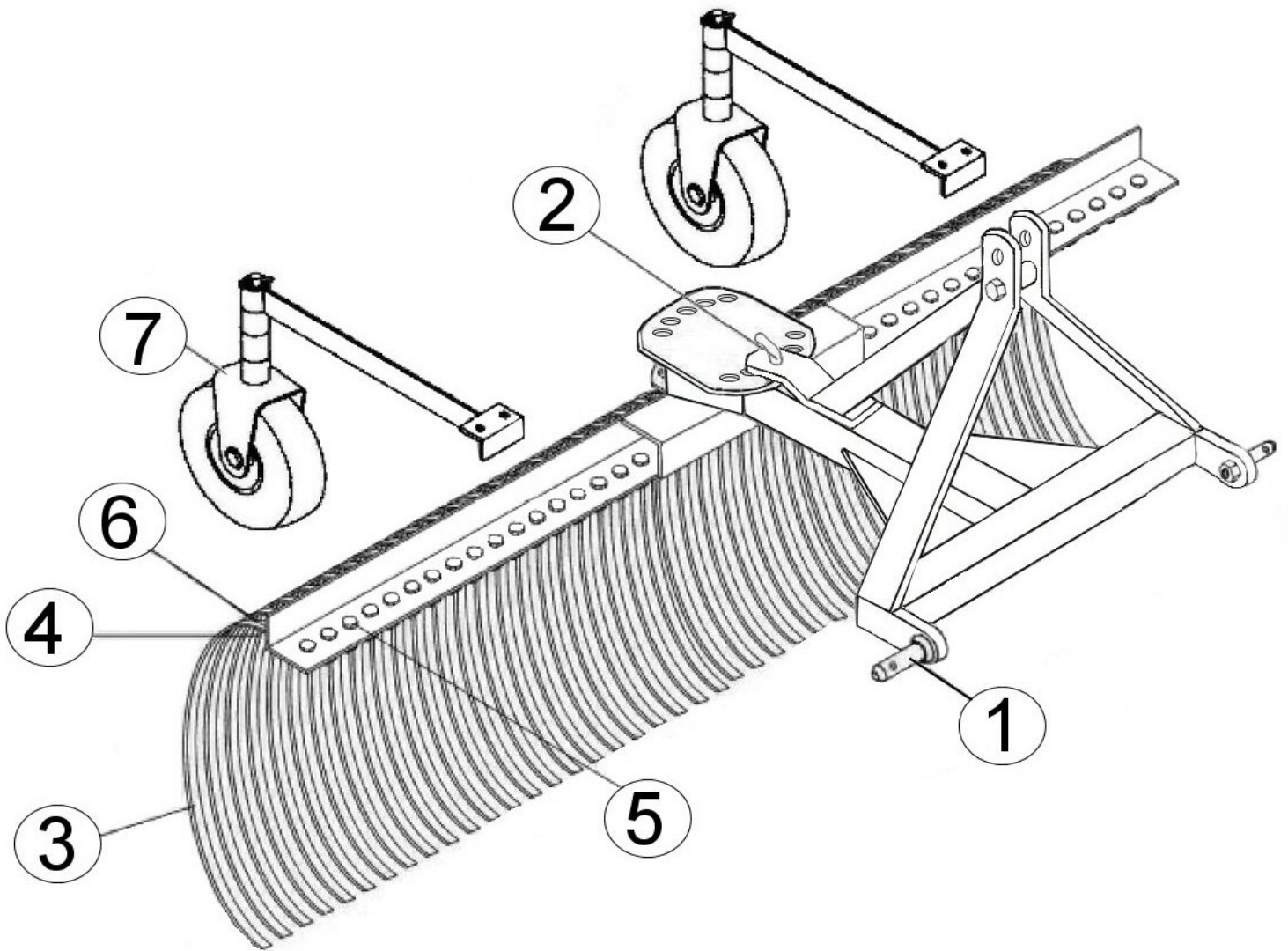
	Page
XB Middle Buster/ Sub Soiler-----	3
XB Yard Rake-----	4
XB Rear Blade-----	5
XB Box Blade EZ Shank-----	6
XB Seeder-----	7
XB Angle Frame Disc (Sealed Bearing Model)-----	8
XB Cutter-----	10
XB Finishing Mower-----	12
40hp Gearbox-----	14
PTO Shaft-----	16
Blade Spindle Unit-----	17
Tiller XB & XBx-----	18
Tiller Side Gearbox-----	20
Tiller Top Gearbox-----	22
Tiller Hub Parts-----	24
PTO 147122-----	26
XB Dump Trailer-----	28
Dump Trailer Tire & Wheel-----	30
Warranty-----	31

XB MIDDLE BUSTER/SUB-SOILER



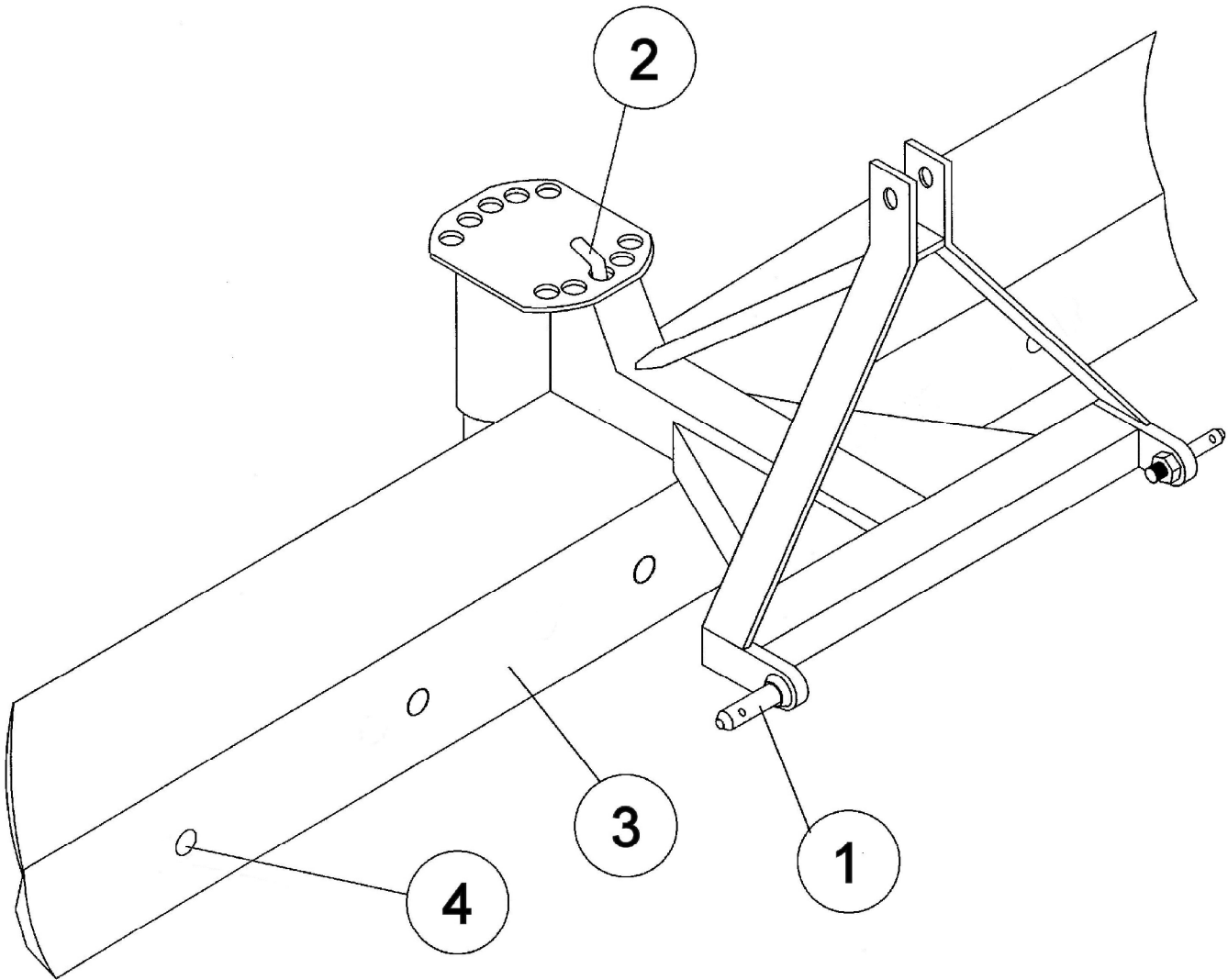
Ref. No.	Model #	Part #
1	(CAT. 1) Lift Pins (Pkg. 2)	500001
2	Sub Soiler Point	177008
3	7/16" x 4" Plow Bolt Set (Pkg. 2)	503002
4	Furrower 12"	177007

XB YARD RAKE



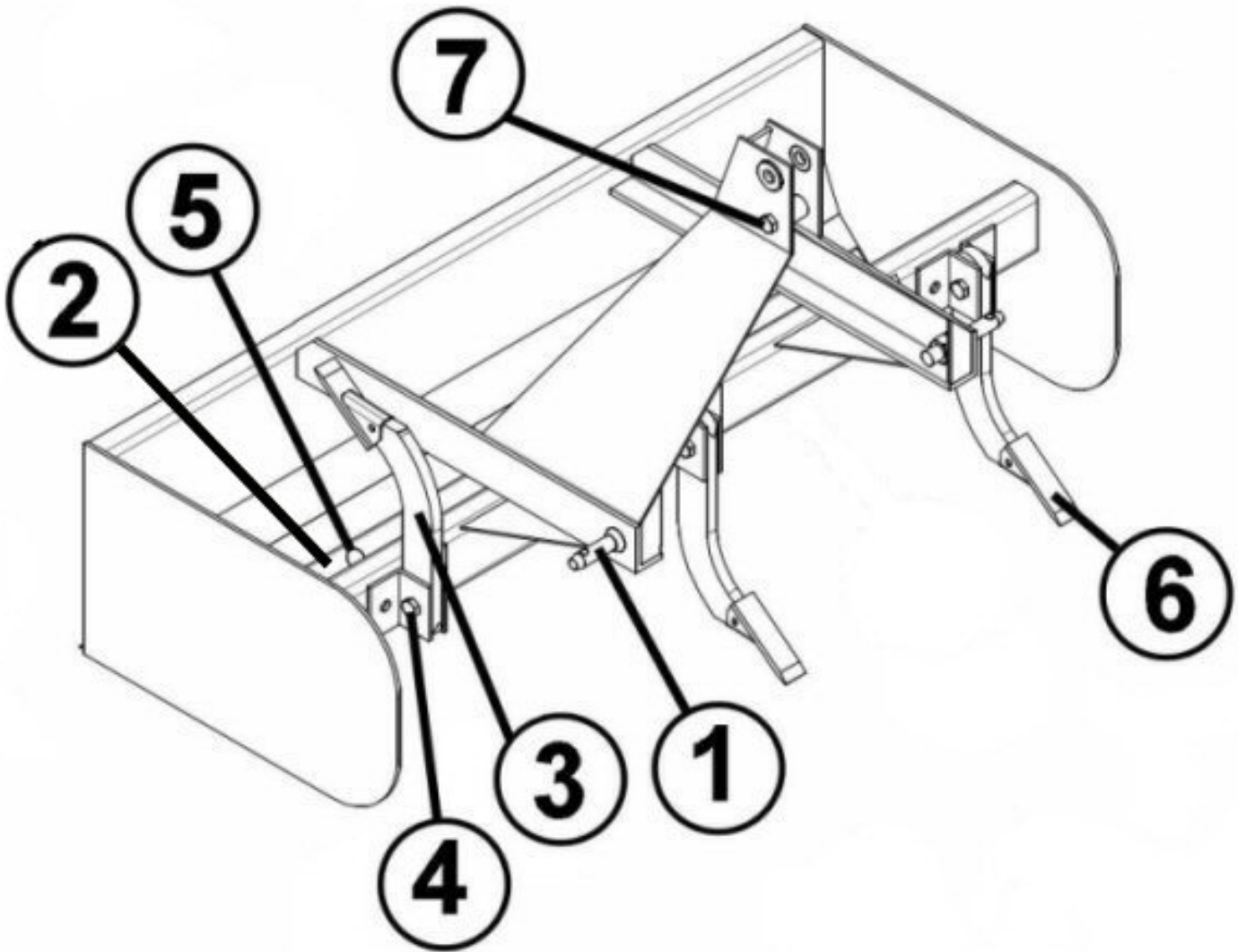
Ref. No.	Model #	Part #
	TYR-60-XB	
1	(CAT. 1) Lift Pins (Pkg. 2)	500001
2	Index Pin	340065
3	Tines (5/PK)	503006
4	60" Strap	350063
5	3/8" x 1" Bolt	-
6	3/8' x 1-1/2" Bolt	-
7	XB Rake Gauge Wheel Kit	506010

XB REAR BLADE



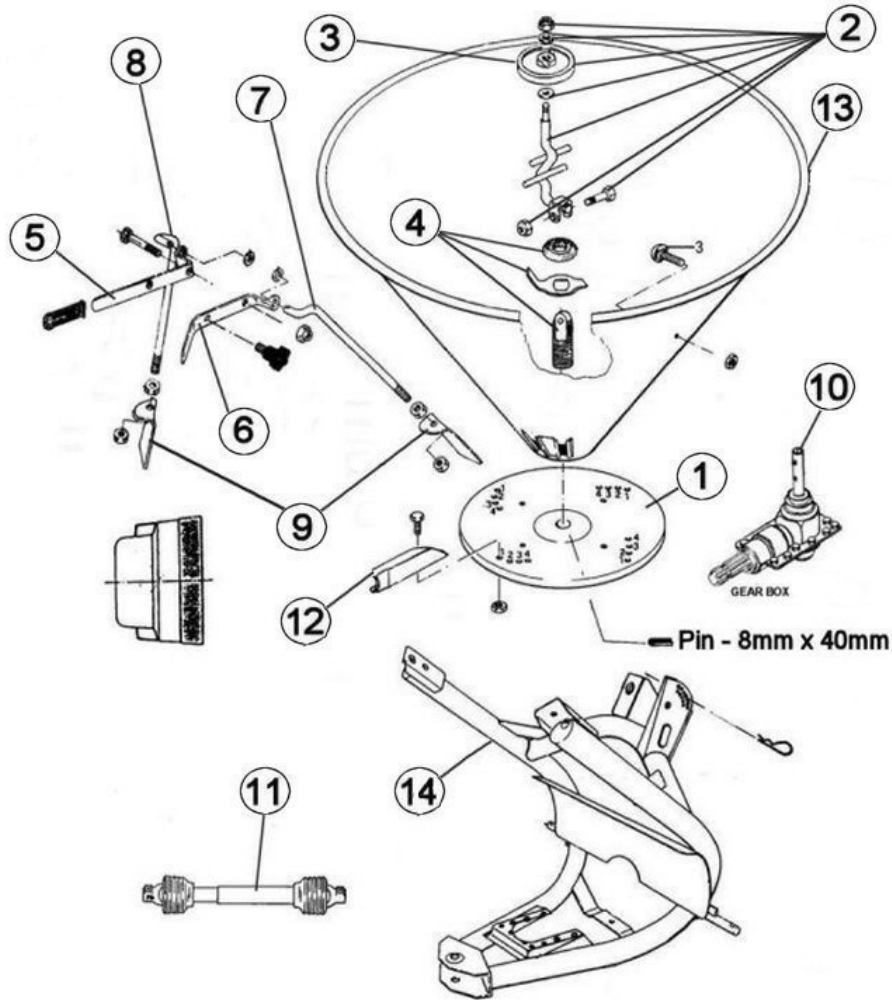
Ref. No.	Model #	Part #
1	(CAT. 1) Lift Pins (Pkg. 2)	500001
2	Index Pin	340065
3	60" Cutting Edge	188015
4	Cutting Edge Bolt Set (9/PK)	503001

XB BOX BLADE



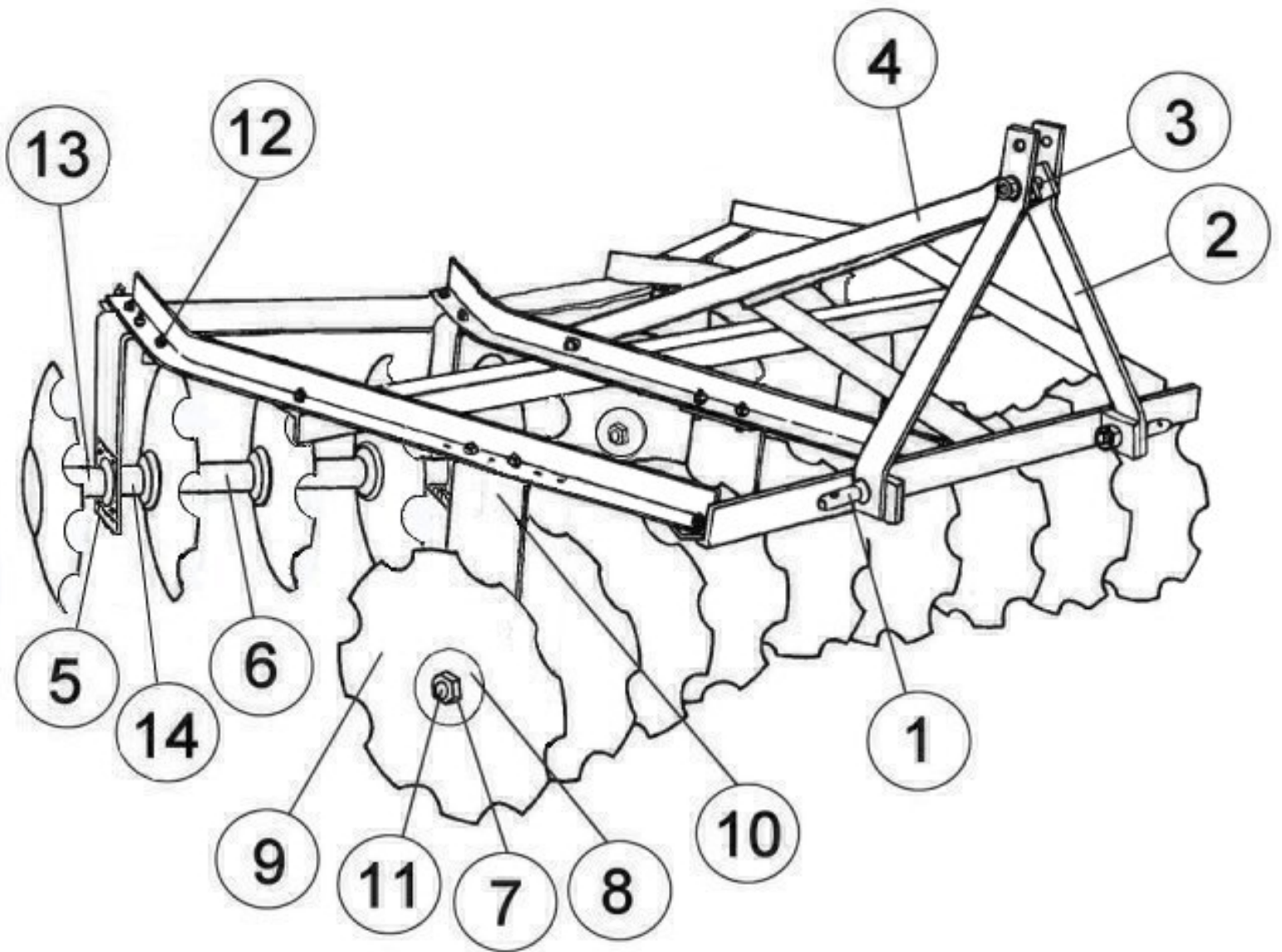
Ref. No.	Model #	Part #
1	(CAT. 1) Lift Pins (Pkg. 2)	500001
2	48" Cutting Edge	188006
3	Rotatable Ripper Shank /w Tooth	120002
4	Rotatable Ripper Shank Bolt Pkg. (Bolts & Locknuts 5 Ea.)	503505
5	Cutting Edge Bolt Set (9pk)	503001
6	Tooth (Weld on)	174010
7	5/8" X 4-1/2" Lift Arm Spacer Kit	504500

XB SEEDER



Ref. No.	Model #	Part #
	S-XB	
1	Spreader Disc W/Vanes	900004
2	Agitator	900138
3	Buffer Wheel	900005
4	Lower Agitator Kit	509000
5	LH Shutter Lever	900120
6	RH Shutter Lever	900122
7	RH Lever Tie Rod	900123
8	LH Lever Tie Rod	900121
9	Shutters (1-Left & 1- Right)	509001
10	Gearbox	900110
11	20" PTO Shaft	147020
12	Distributor Vanes (PK of 4)	509002
13	Steel Hopper	
14	Seeder Frame	

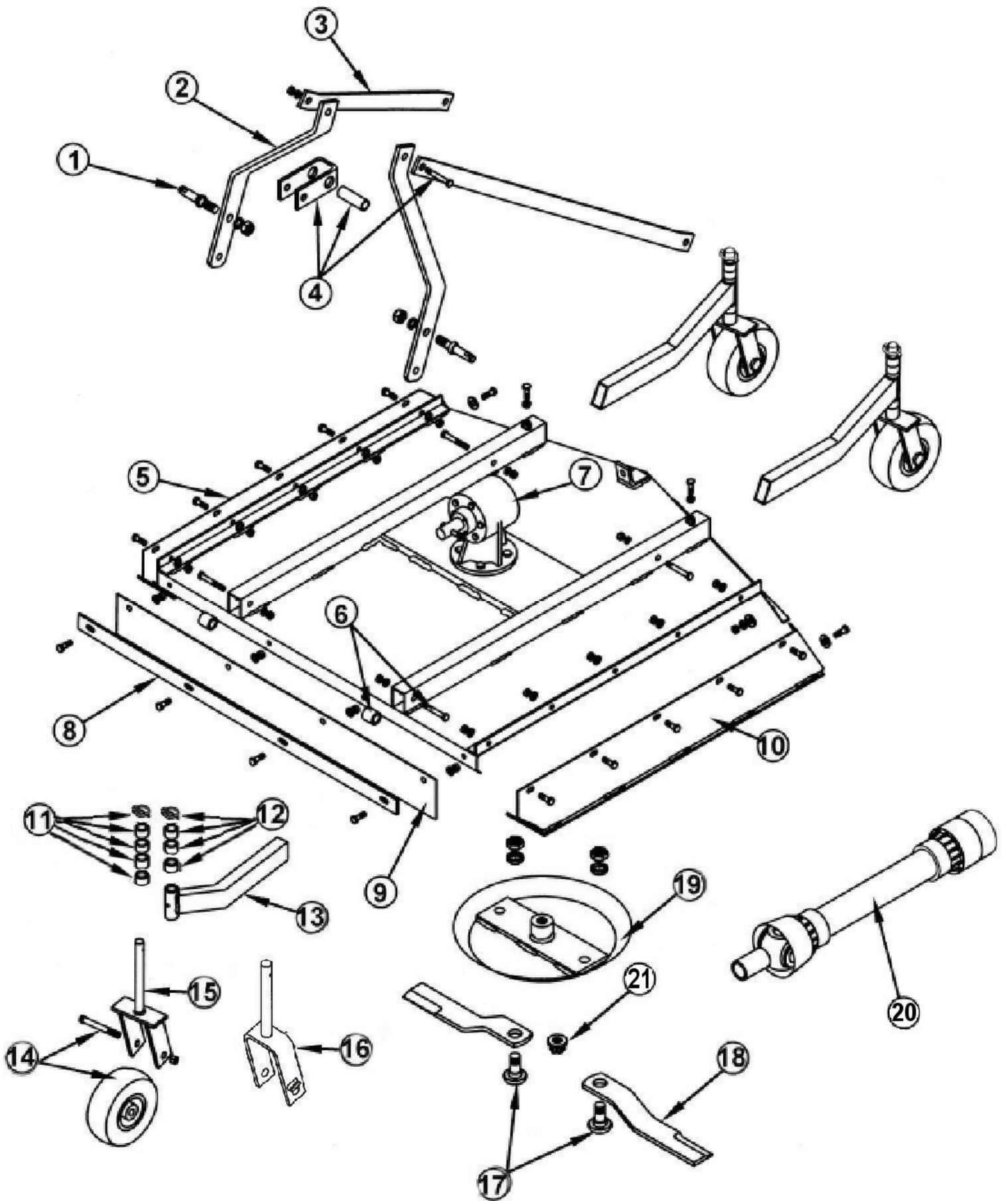
XB ANGLE FRAME DISC (SEALED BEARING MODEL)



XB ANGLE FRAME DISC PARTS

Ref. No.	Model #	Part #
	14-16-SB-N-XB	
1	(CAT. 1) Lift Pins (Pkg. 2)	500001
2	Lift Arm	311070
3	Lift Arm Spacer Kit	501090
4	Lift Arm Brace	311079
5	Sealed Bearings & Flanges	504125
6	Spacer	129500
7	Locknuts 1" (4pk)	504280
8	Axle Washer	322005
9	Disc Blade 14" Notched	189214
10	Bearing Stand	322064
11	Axle	401065
12	1/2" X 1-1/2" Bolts	NA
13	Spacer 3-5/8"	129550
14	Spacer 2-3/8"	129525

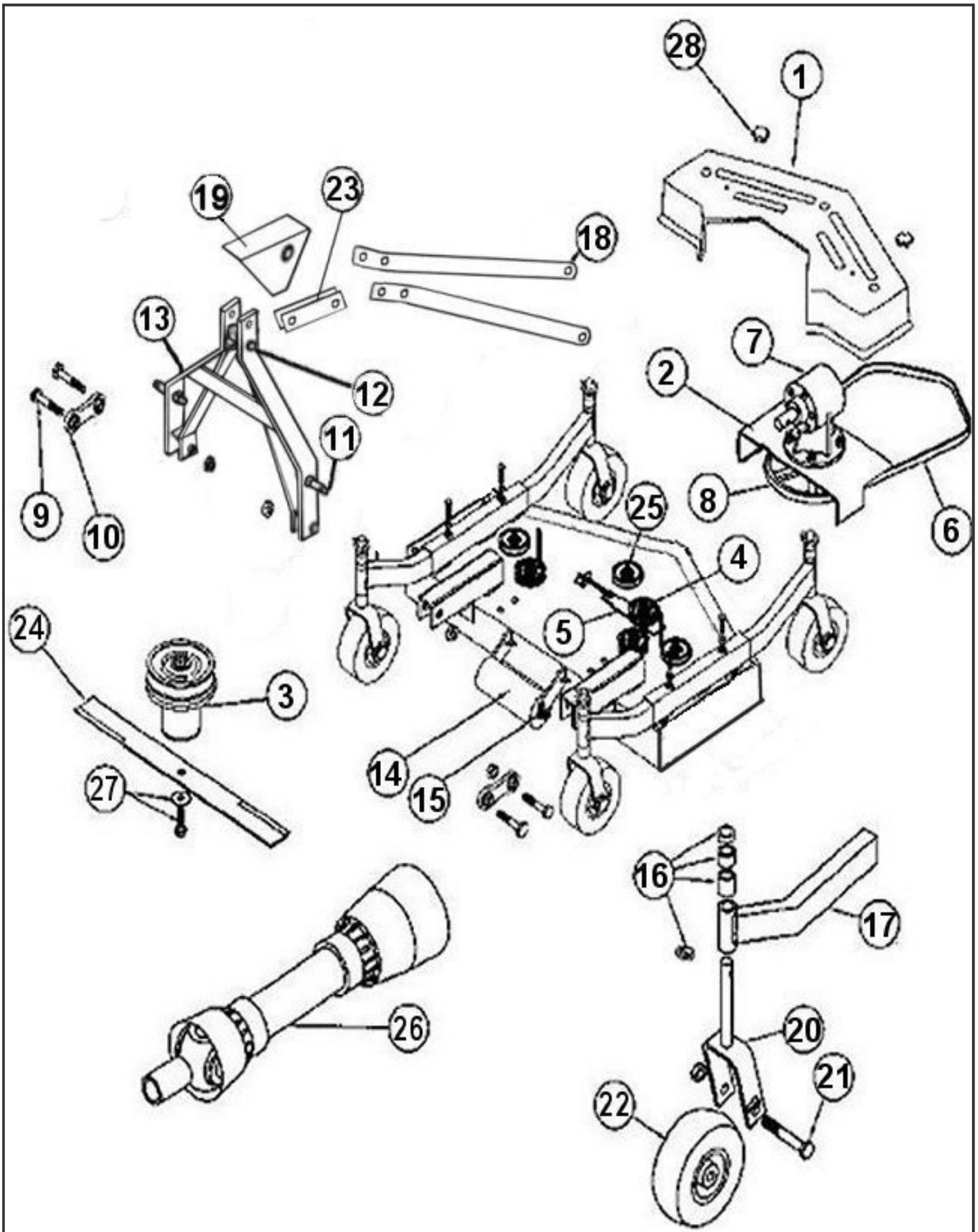
XB KUTTER



XB KUTTER PARTS

Ref. No.	Model #	Part Number
		L-48-40-XB
1	CAT. 1 Lift Pins (Pkg. 2)	500001
2	Lift Arm	311100
3	Lift Arm Brace	311099
4	Swivel Link Kit (inc. bolt)	501027
5	Right Side Panel Kit (inc. bolts)	501003
6	Lift Arm Attachment Kit (inc. bolts)	501005
7	Gearbox	184000
8	Belt Guard Kit (inc. belt & strip)	501006
9	Belt Guard	311101
10	Left Side Panel Kit (inc. bolts)	501004
11	Tailwheel Arm Spacer Kit (Before 10-1-18)	501007
12	Tailwheel Arm Spacer Kit (After 10-1-18)	501014
13	Tail Wheel Arm	403700
14	Wheel Kit (inc. axle bolt)	502020
15	Tailwheel Arm Fork (Before 10-1-18)	403026
16	Tailwheel Arm Fork (After 10-1-18)	403023
17	Blade Bolt Set	501001
18	Mower Blade Set	501118
19	Stump Jumper	403031
20	29" PTO Shaft	147029
21	1" Castle Nut Pkg.	501110

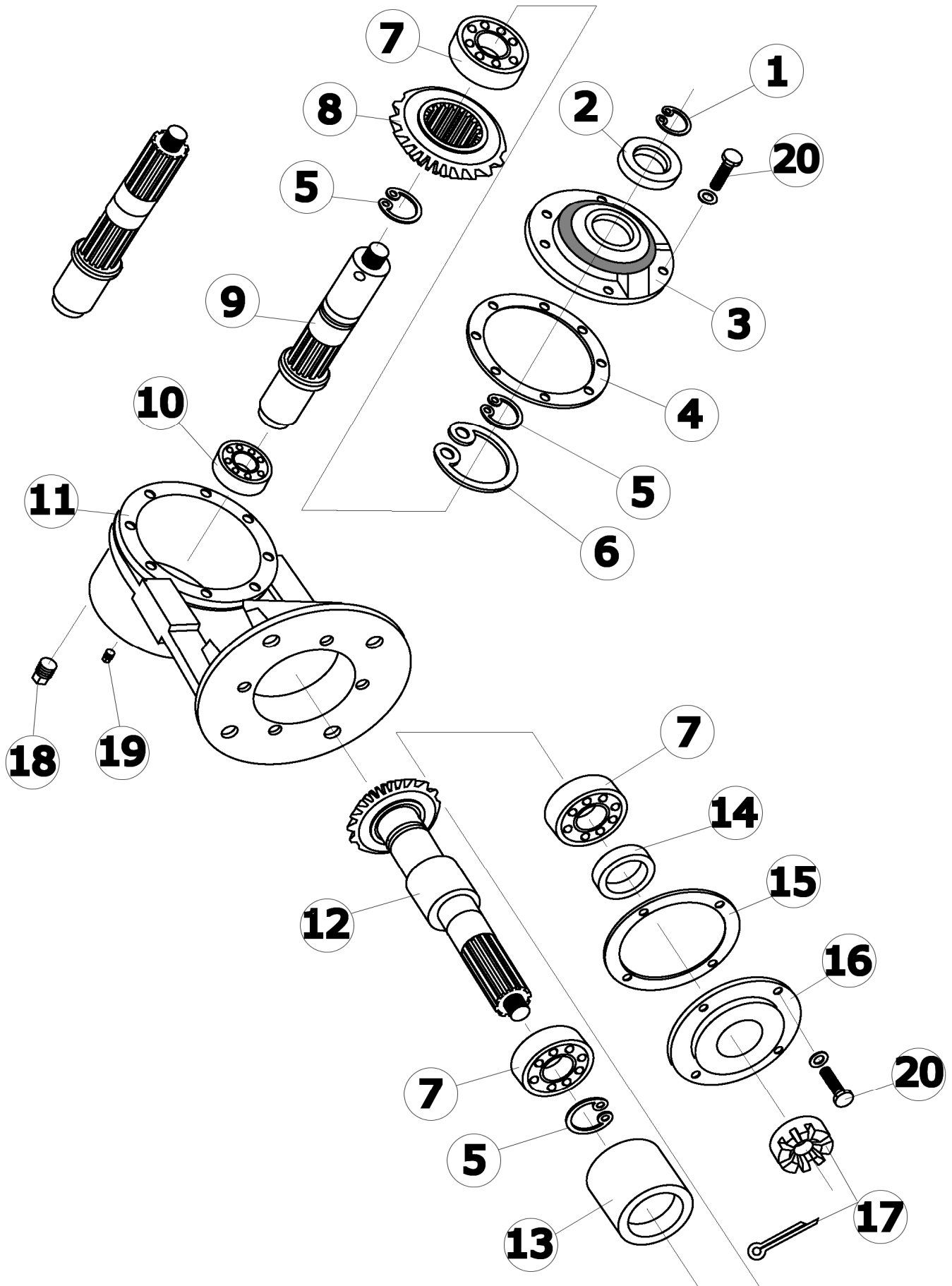
FLEX HITCH XB REAR FINISHING MOWER



FLEX HITCH XB REAR FINISHING MOWER PARTS

Ref. No.	Model #	Part #
		RFM-48-XB
1	Top Cover	124684
2	Gearbox Plate	403029
3	Spindle Unit -Single	502303
4	Idler Pulley -Single	164090
5	Belt Adjustment Assembly	403682
6	V -Belt*	167108 ¹
7	Gear Box	184000
8	Main Pulley -Single	165114
9	Swivel Link Bolts 3/4" x 4" w/ nuts	502011
10	Swivel Link Set	502010
11	CAT. 1 Lift Pin (Pkg. 2)	500001
12	Lift Arm Spacer w/ Nut & Bolt	501095
13	Lift Arm Assembly	403664
14	Center Roller w/ Axle	502110
15	Roller Axle	403670
16	Height Adjuster Set	502120
17	Tail Wheel Arm	403700
18	Brace Arm	310067
19	Pivot Shield Kit	501029
20	Wheel Fork	403023
21	Axle Bolt 3/4" x 5" w/ Nut	502125
22	Tire & Rim w/ Axle & Nut	502015
23	Pivot Bar	401031
24	Blade Set w/ Bolts	502316
25	Spindle Pulley - Single	502313
26	22" PTO Shaft	147022
27	LH Blade Bolt Set w/ Washers	502310
28	Plastic Knob	502287

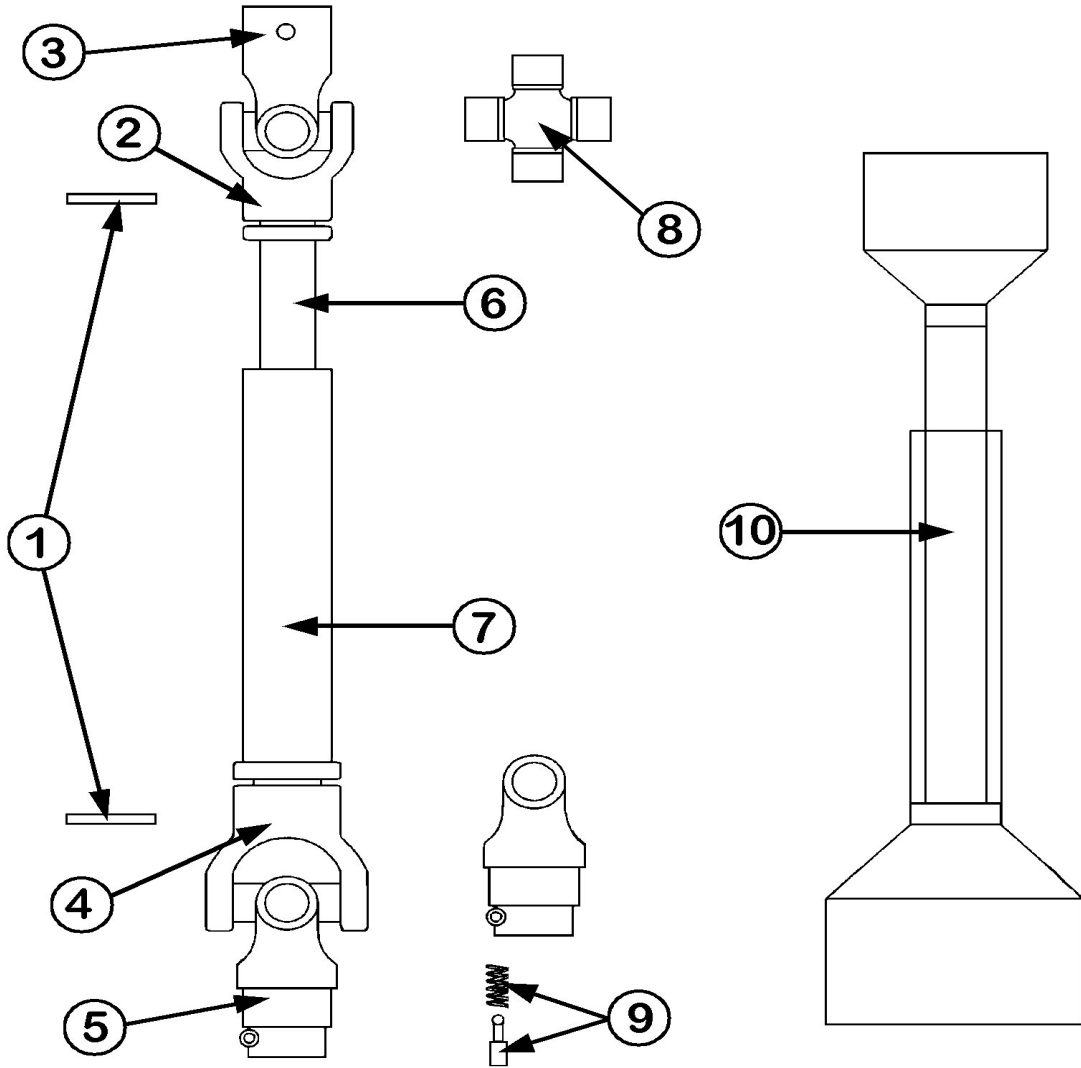
40 HP GEARBOX



40 HP GEARBOX PARTS

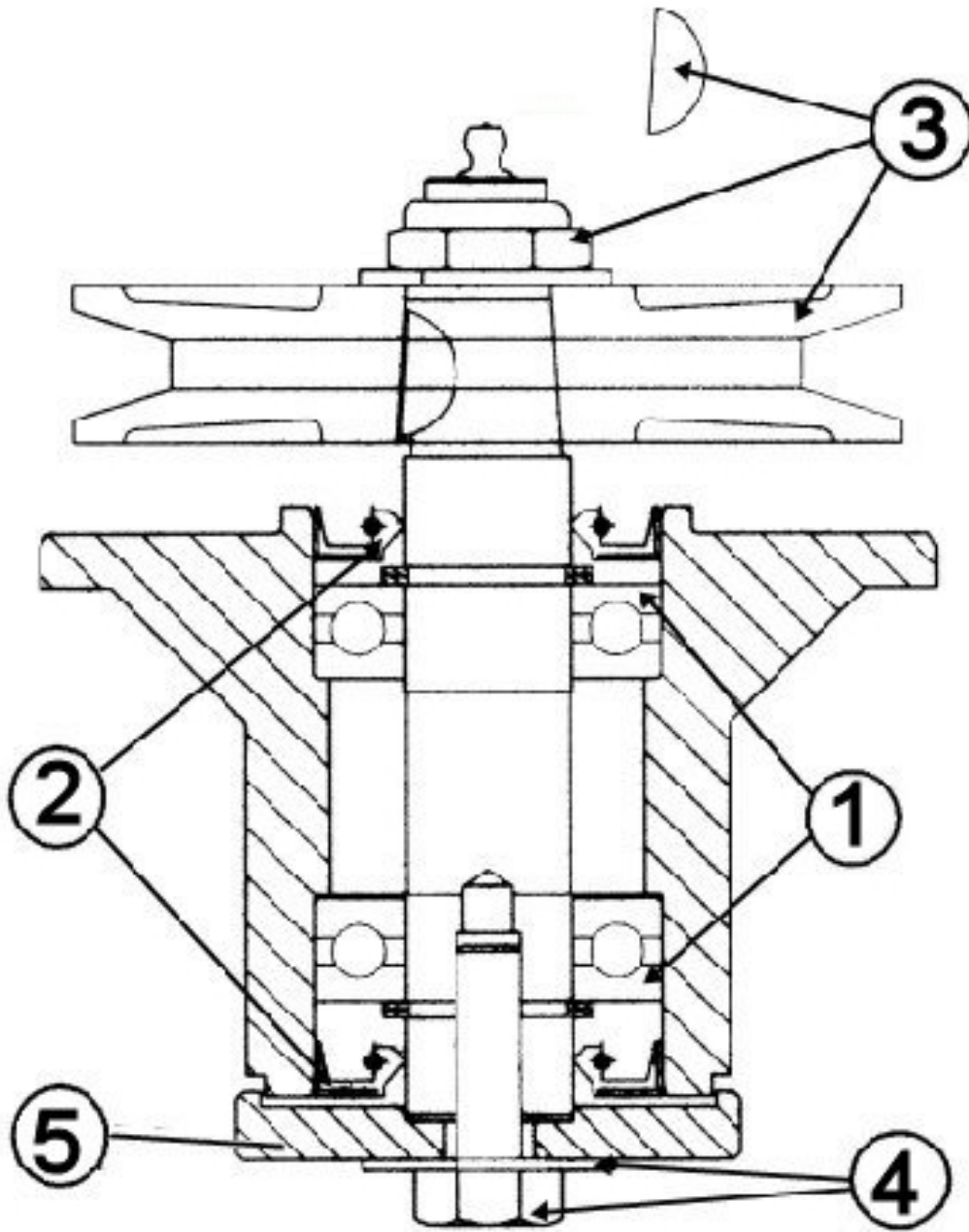
Ref. No.		Part #
		Gearbox 184000
1	Snap Ring	106138
2	Input Seal (NAK 35 x 54 x 10)	156010
3	Front Cap	129015
4	Front Cap Gasket	124130
5	Snap Ring	131031
6	Snap Ring	131030
7	Bearing (Hoover 208)	155005
8	Input Gear	185007
9	Input Shaft	186010
10	Bearing (NSK 6207)	155010
11	Housing	129010
12	Output Shaft	185005
13	Spacer	-
14	Output Seal (NAK 40 x 54 x 7)	156005
15	Bottom Cap Gasket	124131
16	Bottom Cap	129005
17	1' Castle Nut /w Washer & Cotter Pin	501110
18	1/2" Pipe Plug	131035
19	1/8" Pipe Plug	131040
20	3/8" x 1" Bolt & Lock washer	-

SHEAR PIN PTO SHAFT



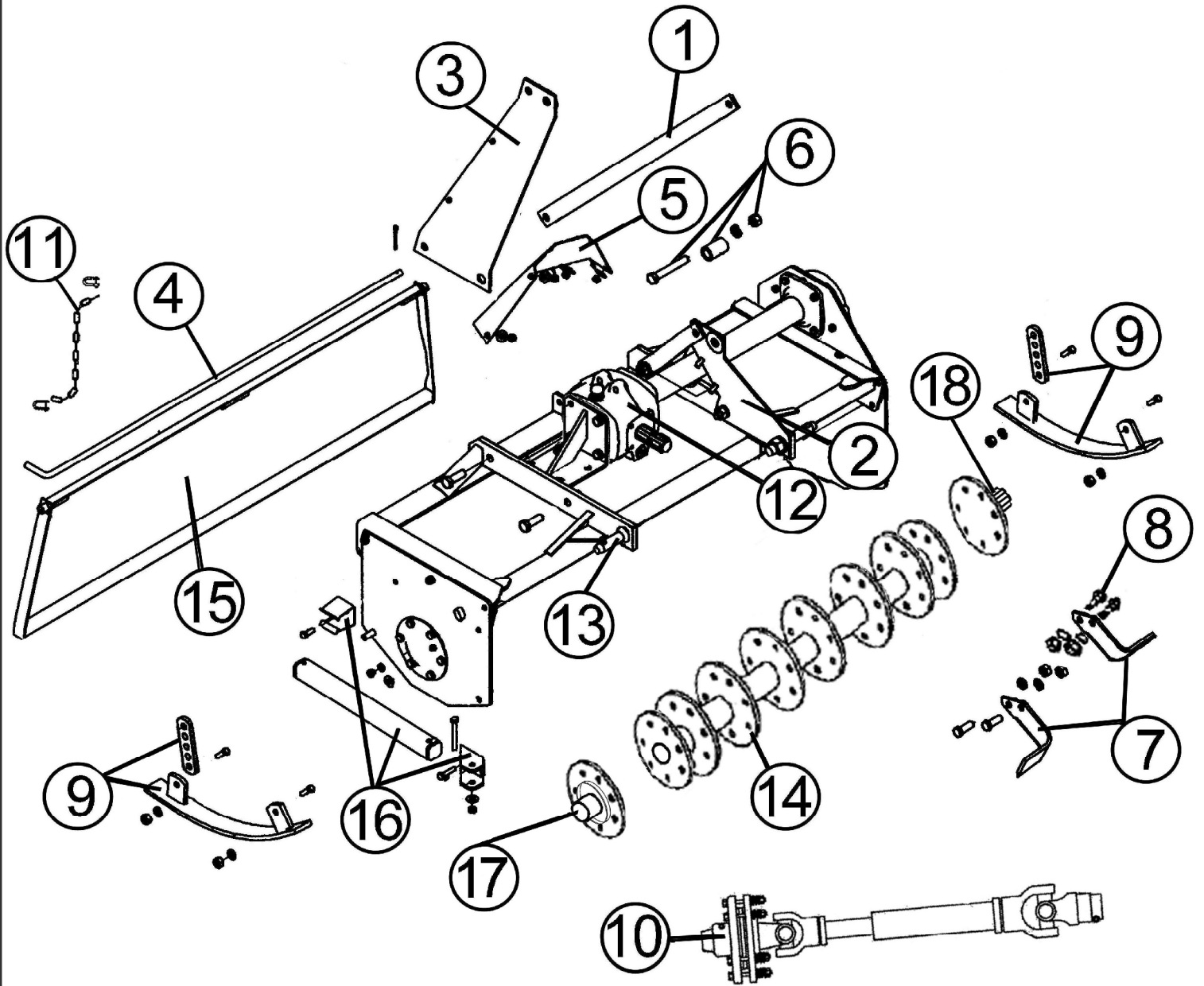
Ref. No.	Part #	
	Model #	
	147022	147029
1	Roll Pin Kit	500131 500131
2	Male Tube End Yoke	151045 151045
3	Implement End Yoke	151040 151040
4	Female Tube End Yoke	151050 151050
5	Tractor End Yoke	151035 151035
6	Inner Tube 14 Series	151090 151090
7	Outer Tube 14 Series	151091 151091
8	Cross Kit # 4	170015 170015
9	Quick Disconnect Pin	170110 170110
10	Safety Shield BYPY	124310 124310
10	Safety Shield Eurocardan	124311 124311

BLADE SPINDLE UNIT



Ref. No.		Part #		
		502303	502301	502304
1 & 2	Bearing Kit - (2) Ball Bearings (6205), (2) Seals (TCM25x52x7TC), (4) Snap Rings	555009	555009	555009
3	Spindle Pulley /w Nut & Key	502313	502312	502314
4	Blade Bolt Set (3) /w Washer	502310	502310	502310
5	Spindle Cap	191302	191302	191302

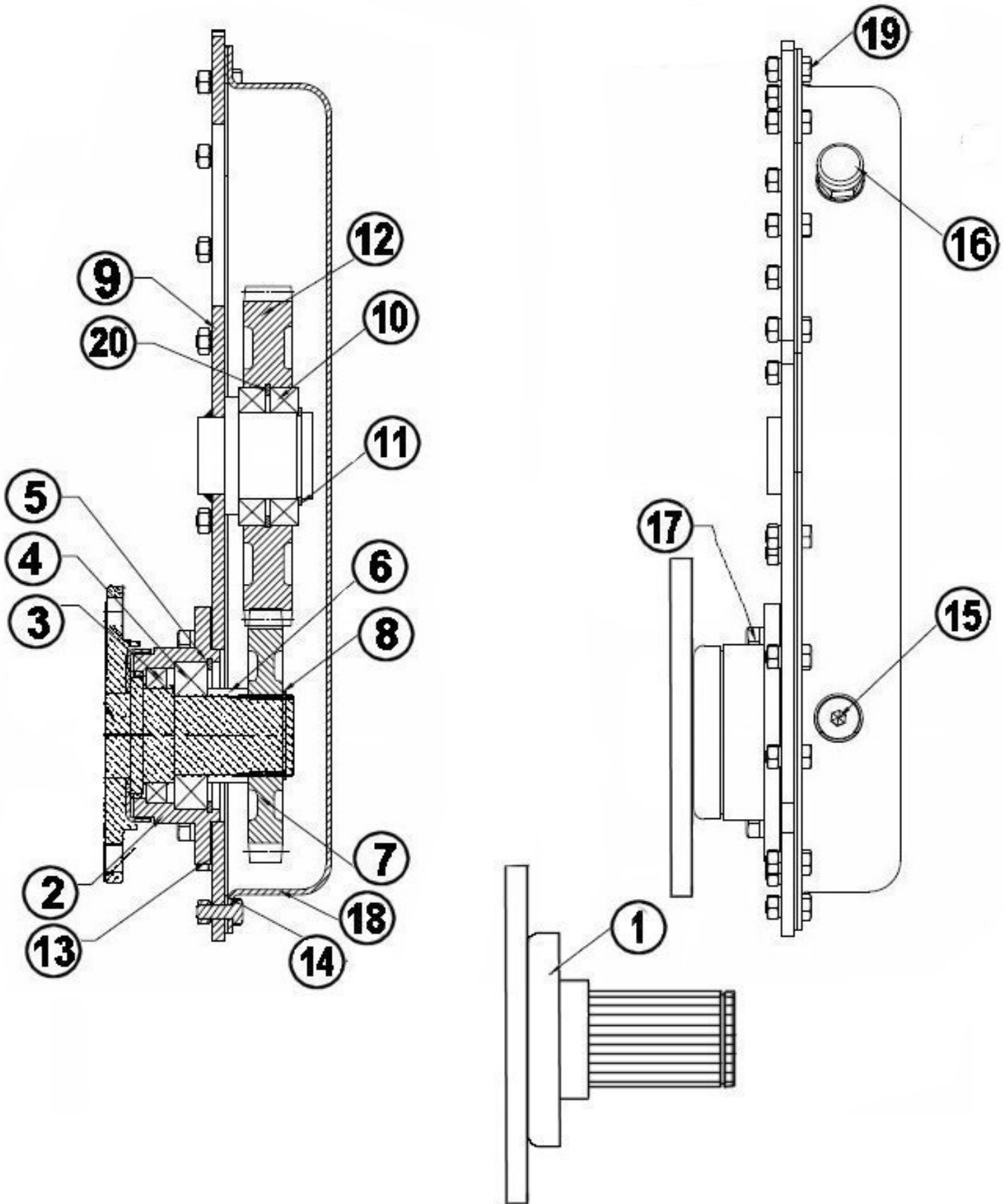
XB & XBX TILLER



TG-48-XB & TG-54-XBX TILLER PARTS

Ref. No.	Model #	Part #	
		TG-48-XB	TG-54-XBX
1	Lift Arm Brace	381001	381001
2	Lift Arm (LH)	404404	404404
3	Lift Arm (RH)	404405	404405
4	Tail Rod Assembly	505116	505117
5	Center Shield Assembly	505020	505020
6	Lift Arm Spacer Kit	505021	505021
7	Tine Pkg. (1-Right,1-Left) w/ Bolts	505002	505002
7	Tine Pkg. (3-Right,3-Left) w/ Bolts	505006	505006
7	Complete Tine Pkg. (36 pcs.)	505036	505036
8	Tine Bolt Pkg. (12 pcs.)	505012	505012
8	Tine Bolt Pkg. (72 pcs.)	505072	505072
9	Skid Assembly Left or Right	505060	505060
10	PTO Shaft w/ 6" Clutch Only	147122	147122
11	Chain & Shackle Kit	505140	505140
12	Top Gearbox	184073	184073
13	Lift Pins Cat. 1 (2/Pk)	500001	500001
14	Rotor	CALL	CALL
15	Back Plate	404406	404415
16	Support Stand Assembly	505022	505022
17	Hub Stub Shaft w/Disc	See Page 24	See Page 24
18	Side Gearbox Hub & Shaft w/Disc	See Page 20	See Page 20

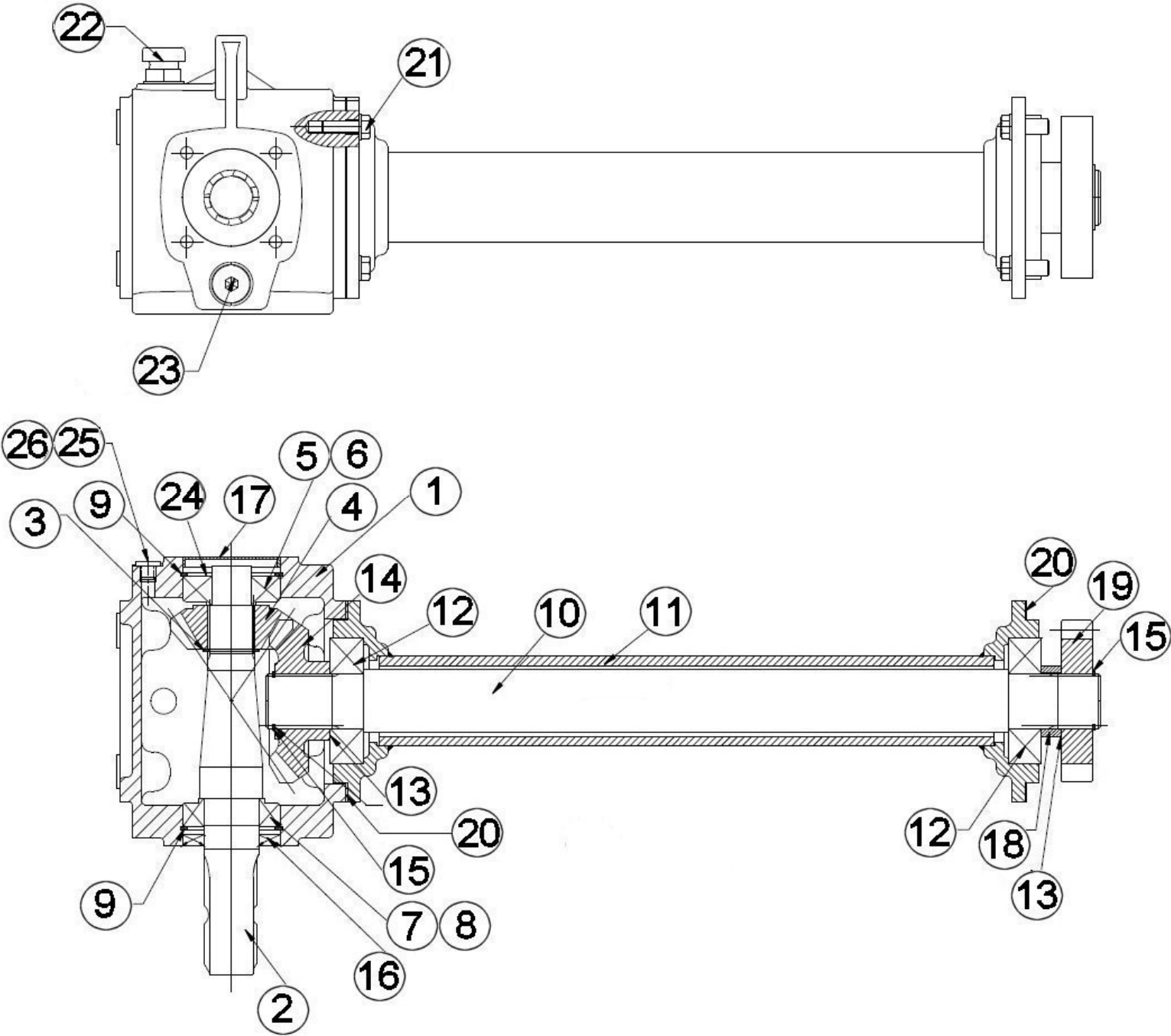
TG-48-XB & TG-54-XBX SIDE GEARBOX



TG-48-XB & TG-54-XBX SIDE GEARBOX PARTS

Ref. No.	Model #	Part #	
		TG-48-XB	TG-54-XB
1	Side Gearbox Hub & Shaft w/Disc	100106	100106
2	Hub	977028	977028
3	Oil Seal (55 X 78 X 12) Dbl Lip	977029	977029
4	Bearing (ISO 1209)	977030	977030
5	Snap Ring (ID 85mm X OD 90.5)	977031	977031
6	Spacer (55 X 46 X 23.5)	977032	977032
7	Spur Gear (27 Teeth)	977033	977033
8	Snap Ring (45mm X ID 41.5)	977034	977034
9	Housing	977035	977035
10	Bearing (6010)	977036	977036
11	Snap Ring (50mm X ID 45.8)	977037	977037
12	Spur Gear (38 Teeth)	977038	977038
13	Gasket Round	977039	977039
14	Gasket	977040	977040
15	Pipe Plug 1/2" - 14 NPT	977019	977019
16	Pressure Relief Plug 1/2" - 14NPT	902007	902007
17	Hex Cap Screw, Lockwasher(Pkg.4)	505024	505024
18	Cover	977041	977041
19	Hex Cap Screw, Lock Washer, Nut (8-Pk)	505023	505023
20	Snap Ring (80mm X OD 85.5)	977046	977046

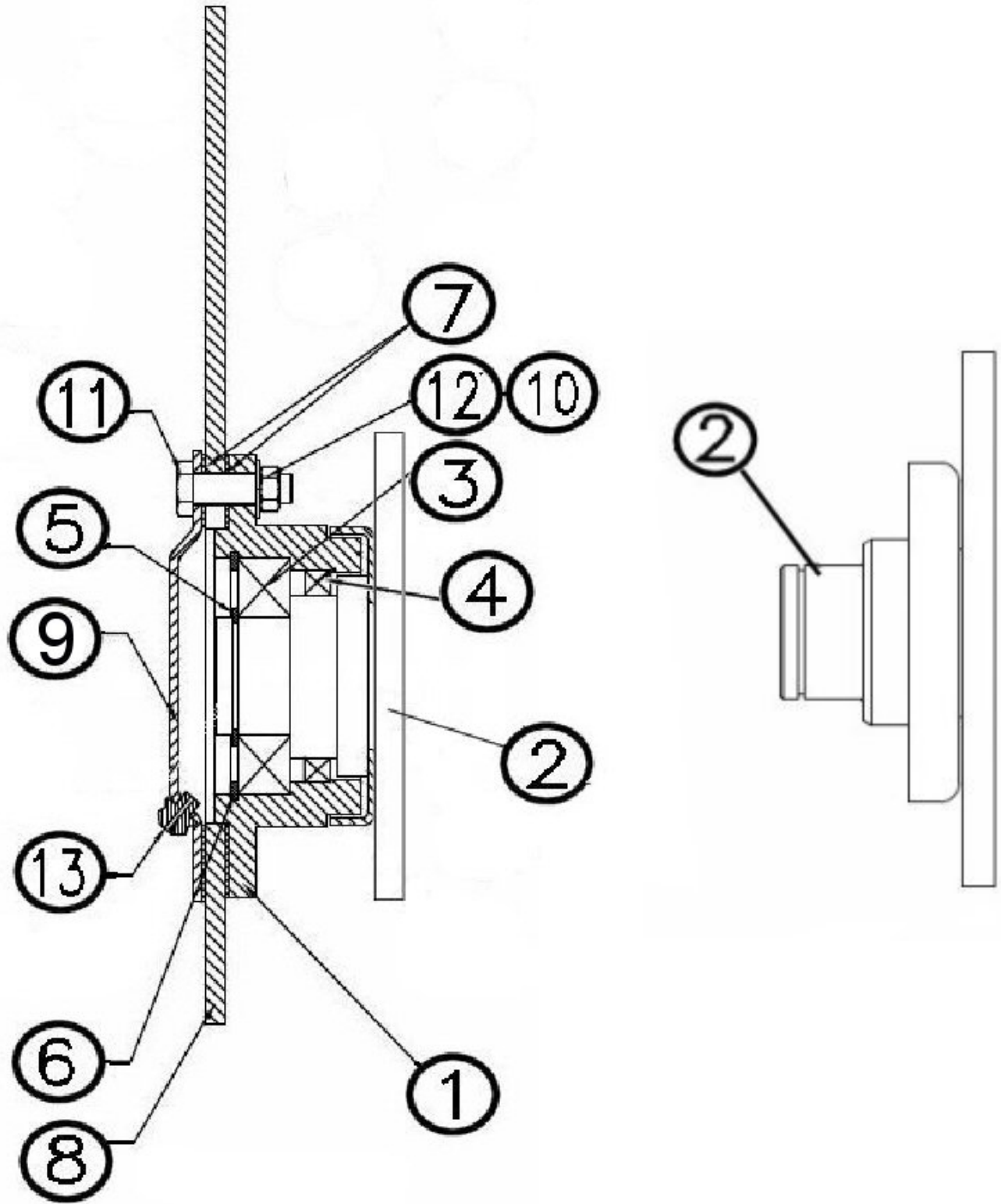
TG-48-XB & TG-54-XBX SERIES TOP GEARBOX



TG-48-XB & TG-54-XBX SERIES TOP GEARBOX PARTS

Ref. No.	Model #	Part #	
		TG-48-XB	TG-54-XB
1	Housing	977001	977001
2	Input Shaft	977002	977002
3	Retaining Ring 30mm x 27.9 ID	977003	977003
4	Bevel Pinion (13 Teeth)	977004	977004
5	Bearing Cone (30305)	977005	977005
6	Bearing Cup (30305)	977006	977006
7	Bearing Cone (32007x)	977007	977007
8	Bearing Cup (32007x)	977008	977008
9	Retaining Ring 62mm X 66 OD	977009	977009
10	Output Shaft	977010 (24-3/4")Old 977025 (Over 26")New	977025
11	Hub Cap	977011	977026
12	Bearing (6307)	155007	155007
13	Shim, Output OD 47 X ID 35.2	902312	902312
14	Bevel gear (19Teeth)	977012	977012
15	Retaining Ring 34mm X 31.5 ID	977013	977013
16	Seal Input (13997) 35 X 62 X 8	977014	977014
17	Freeze Plug	977015	977015
18	Spacer 45 X 36 X 12.4	977016	977016
19	Spur Pinion (18 Teeth)	977017	977017
20	Gasket	977018	977018
21	Hex Cap Screw, Lockwasher(4-Pk)	505024	505024
22	Pressure Relief Plug 1/2" - 14NPT	902007	902007
23	Flange Plug 1/2" - 14NPT	977019	977019
24	Shim, Input OD 60 X ID 50	977022	977022
25	Flange Plug (M10 - 1.0)	977023	977023
26	O-Ring(- 011)	977024	977024

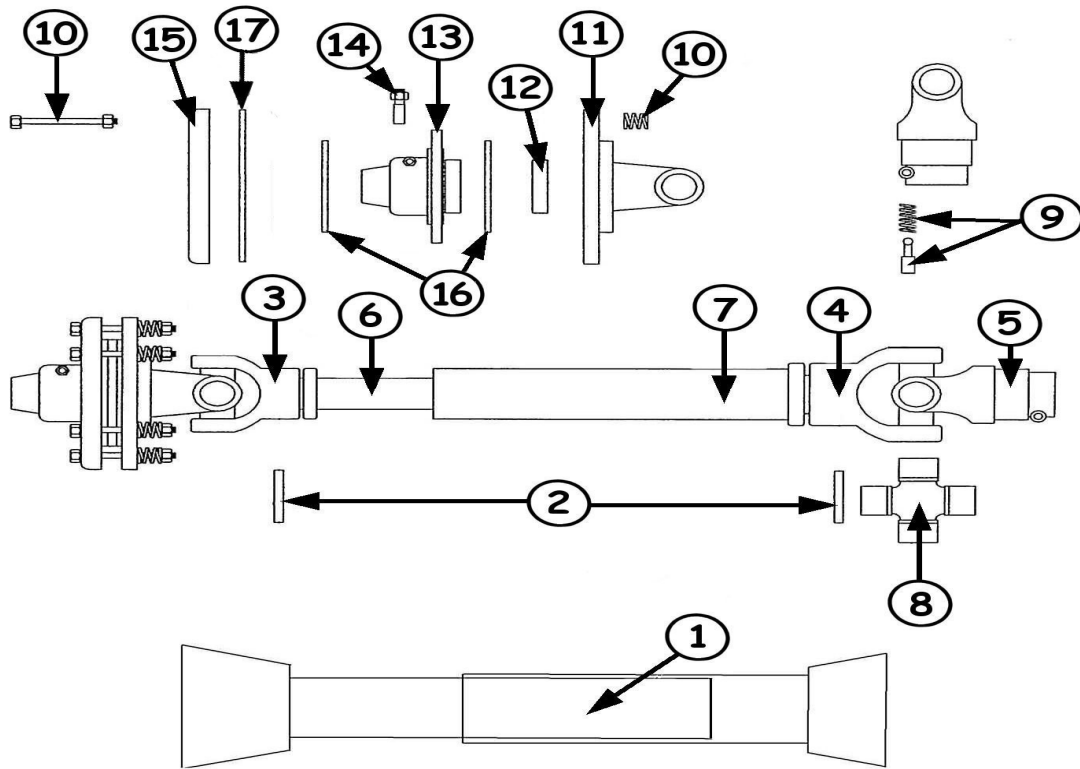
TG-48-XB & TG-54-XBX HUB



TG-48-XB & TG-54-XBX HUB PARTS

Ref. No.		Part #
1	Hub	977047
2	Hub Stub Shaft w/Disc	100107
3	Bearing (6208)	977048
4	Oil Seal (55 X 72 X 9)	977049
5	Snap Ring (40 x 1.5) 40mm X ID 36.5	977050
6	Snap Ring (80 x 2.5)	977046
7	Gasket	977039
8	Mounting Plate	977051
9	Cover	977052
10	Lock Washer (M10)	977021
11	Hex Cap Screw (M10-1.5 x 35)	977053
12	Nut (M10 -1.5)	977054
13	Grease Zerk (1/4")	132018

22" PTO 147122



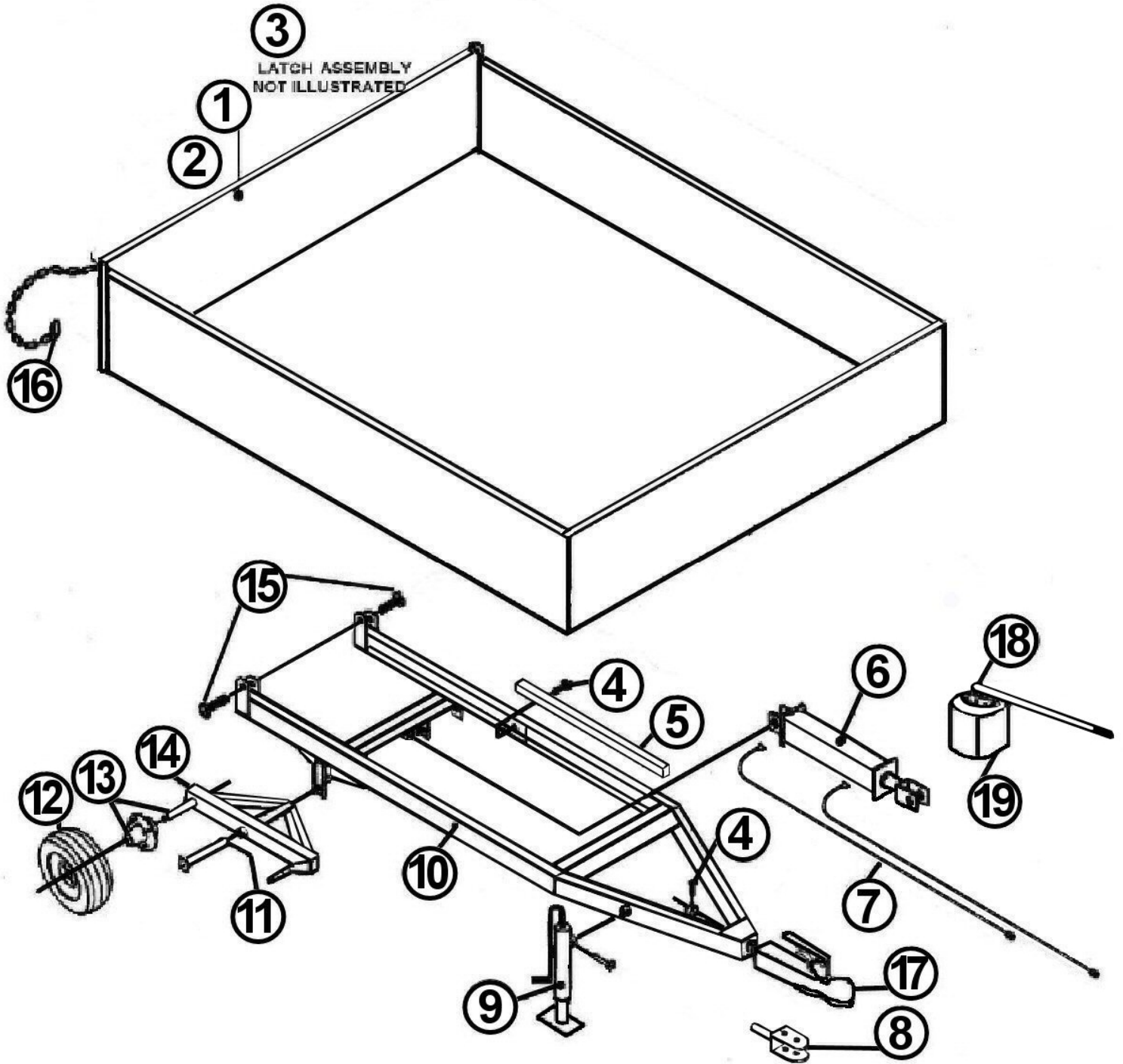
Ref. No.	Model #	Part #
	147122	
1	Safety Shield	124310
2	Roll Pin Series 4 Kit	500131
3	Male Tube End Yoke	151045
4	Female Tube End Yoke	151050
5	Tractor End Yoke	151035
6	Inner Tube 14 Series	151090
7	Outer Tube 14 Series	151091
8	Cross Kit # 4	170015
9	Quick Disconnect Pin	170110
10	Clutch Spring w/ Compression Bolts & nuts (Pkg. 8)	500150
11	Flanged Yoke	140226
12	Bushing	140221
13	Friction Hub	140220
14	Tapered Lock Bolt	147350
15	Pressure Plate (Outer)	140216
16	Friction Disc for 6" Slip Clutch (4-3/4" OD x 2-11/16" ID)	140219
16	Friction Disc for 7" Slip Clutch (5-1/2" OD x 3-5/16" ID)	196008
17	Inner Disc	124317

LEFT

BLANK

INTENTIONALLY

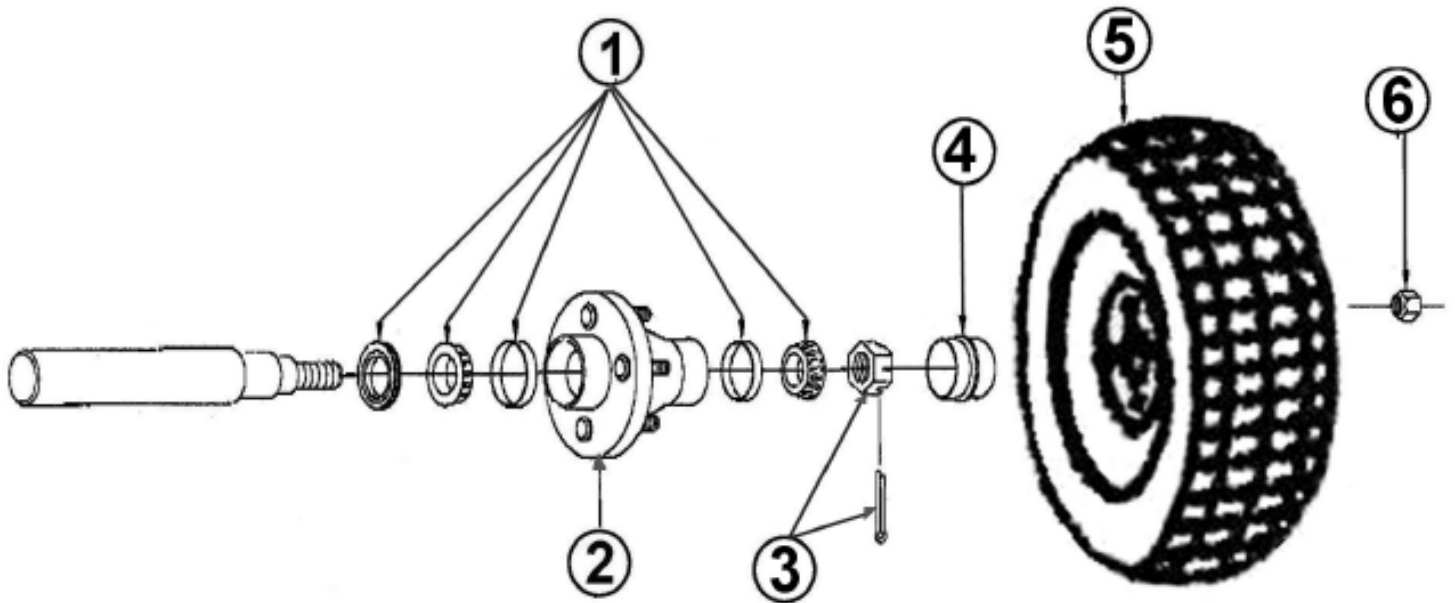
XB - DUMP WAGON



XB - DUMP WAGON PARTS

Ref. No.	Model #	Part #
		1.5T-DT-XB
1	Panel/Rear	906001
2	Bolt Pkg. HHS 3/8x 3/4 Gr. 5, 3/8 Flat Washer(4 ea.)	580100
3	Rear Panel Latch	NA
4	Bolt Pkg. HHS 1/2 x 2-1/2 Gr. 5, 1/2 Locknut(2 ea.)	580120
5	Prop / Box	NA
6	Cyl / Hyd 3" x 12"	906100
7	Hose / Hyd 102"	906101
8	Swivel Clevis Hitch Pkg. (Hitch, Bolt, Bushing)	906005
9	Jack 10"	906007
10	Frame Trailer / Main	NA
11	Cotter Pin 5/32" x 3" (Pkg. 2)	580130
12	Frame Tandem / Pivot	906008
13	Hub / Wheel Assembly	Next Page
14	Tire / Wheel Assembly	Next page
15	Bolt Pkg. HHS 3/4 x 3-1/2 Gr. 5, 3/4 Hex Locknut(2 ea.)	580140
16	Chain (1/4" Zinc Plated)	NA
17	2" Ball Hitch Pkg. (Hitch, Bolt, Bushing)	906010
18	Manual Hydraulic Pump	906200
19	Plastic Tank for Hand Pump	906150

1-1/2 TON TIRE & WHEEL HUB



Ref. No.		Part #
1	Bearing Pkg. (1) Seal, (2) Bearings L44643, (2) L44610	906021
2	Hub Wheel 4-Bolt	906015
3	1" Slotted Hex Nut & Cotter Pin (5/32 x 1-1/4) Pkg.	906023
4	Cap Hub	906017
5	Rim & Tire 8.5 x 8 Turf Saver	906018
6	Lugnut 1/2" UNF (Pkg. 8)	906020



1. Limited Warranty.

King Kutter, Inc. ("King Kutter"), P.O. Box 1200, Winfield, Alabama 35594, warrants to the original retail purchaser ("Purchaser") that the product that is the subject of this sale is free from defects in material and workmanship at the time of sale.

Under this warranty, King Kutter will repair the defective product free of charge to the Purchaser, with either new or used and reconditioned replacement parts. All warranty service will be performed at service centers designated by King Kutter. If King Kutter is unable to repair the product to conform to the warranty after a reasonable number of attempts, King Kutter will provide, at its option, one of the following: (a) a replacement for the product or, (b) a full refund of the purchase price. Repair, replacement, or refund are the Purchaser's EXCLUSIVE remedies against King Kutter under this limited warranty. King Kutter will not be liable for any special, incidental or consequential damages based upon breach or warranty, breach of contract, negligence, strict tort liability, or any other legal theory. Such damages include, but are not limited to, loss of profits, loss of savings or revenue, loss of use of the product or any associated equipment, cost of capital, cost of any substitute equipment, facilities or services, down time, the claims of third parties including customers, and injury to property. These limitations also apply, to the extent allowed by law, to personal injury.

The purchaser must notify the Seller in writing of any defect in material or workmanship within one (1) year following the date of purchase. If the equipment is used for commercial purposes, the Purchaser must notify the Seller in writing of any defect in material or workmanship within ninety (90) days following the date of purchase. In no event will King Kutter be liable under this warranty unless written notice is received by the Seller within one (1) year from the date of original retail sale.

2. Warranty of Title.

King Kutter warrants that it transfers a good title to the product free of any encumbrances, and free of the rightful claim of any third party for infringement of patent or copyright.

3. What is Not Covered by This Limited Warranty.

King Kutter will not be responsible for damage to or failure in the product which results from accident, misuse, abuse, neglect, installation of attachments not provided by King Kutter, modifications to the product, or damage caused by use of the product for purposes other than those for which it was designed.

4. No Other Warranties.

Unless modified in writing and signed by both parties, this agreement is understood to be the complete and exclusive agreement and warranty between King Kutter and Purchaser, superseding all prior agreements, oral and written, and all other communication between King Kutter and Purchaser related to the subject matter of this agreement.

THIS LIMITED WARRANTY IS IN LIEU OF ALL OTHER WARRANTIES, EXPRESS OR IMPLIED, INCLUDING, BUT NOT LIMITED TO, THE IMPLIED WARRANTY OF MERCHANTABILITY AND THE IMPLIED WARRANTY OF FITNESS FOR A PARTICULAR PURPOSE. No employee of King Kutter nor anyone else is authorized to make any warranty or representation in addition to or different from those made in this agreement.

5. Allocation of Risk.

This agreement allocates the risk of product failure between King Kutter and the Purchaser. This Allocation is recognized by both parties as reflected in the price of the goods. The Purchaser acknowledges that he or she has read this agreement, understands it, and is bound by its terms.